

CAMERAS & Photographic Supplies



THE T. EATON DRUG CO. LIMITED
TORONTO. CANADA.



MORE and more is the camera becoming the companion of every one's outdoor jaunt, whether for the picnic, the vacation, or other outing.

It is so pleasant to be able to take home a picture of the inviting rustic scene or a commemoration of a happy stroll ; or the merry party may be taken for contemplation at some time when the spirits droop. Nothing so quickly revives pleasant memories as a look at former scenes and faces.

We have searched the camera markets of Europe and America to find articles that we could recommend as giving satisfaction under every circumstance to our friends of the film or plate. That we have succeeded, the descriptions and illustrations in this little catalogue will prove.

Every camera convenience and desire for pleasure or profit in photography is listed for your information. We dealt with the manufacturer in every instance and secured the finest line of these goods we've ever brought across the Atlantic, with a big slice off customary prices for cameras and photographic supplies.

There's a design of camera and style of fitting to suit the many different requirements, with prices graded according to the length of the purse.

Do you want a camera, or any other item mentioned in this catalogue? Select the size and style you think would meet your desires, making sure that you get one large enough, enclose the price in a letter with the number of the article and mail to us. In the quickest possible time you'll be taking snapshots of friends and scenes to your utmost delight.

Try the mail order way.

THE T. EATON DRUG CO. LIMITED
TORONTO - - - CANADA

Introduction to the Facsimile Edition

by Robert G. Wilson

Timothy Eaton founded what became Canada's largest privately owned department store. He was born in Ireland in 1834, and after apprenticing in a general store, emigrated to Canada in 1854. He worked as a clerk for a year in a village of Glen Williams in Halton County, C.W. In 1856, Timothy and his brothers opened a general store in Kirkton, C.W., about ten miles from St. Mary's. In 1860, they moved the store into St. Mary's. Here they sold dry goods, boots, farm tools and kitchenware. By 1869, this partnership ended, and Timothy moved to Toronto where he opened a wholesale dry goods store on Front Street, using the name T. Eaton & Co.

Timothy missed the retail contact. So on 8 December 1869, he bought the stock of a retail store at 178 Yonge Street at the corner of Queen Street from James Jennings. He opened his first Toronto retail store at that address, still using the T. Eaton & Co. name. Timothy was intent on ending the general retail practice of bartering. So upon opening this store, he advertised, "We propose to sell our goods for CASH ONLY - In selling goods, to have only one price." His store continued to expand and in 1883 he moved to 190-196 Yonge Street.

By the early 1880s, T. Eaton & Co. was doing an increasing amount of business by mail order. So in 1884, Timothy published his first Eaton's Catalogue. It was 32 pages, and was mostly filled with items for ladies.

The Eaton's catalogue expanded rapidly, with more and more items being offered, eventually growing to over 300 pages. The spring/summer 1898 issue was the first to include cameras. The cameras offered included the Klondike (made by Anthony), the line of Poco cameras made by Rochester Optical and many cameras made by Kodak such as the Pocket Kodak, the Folding Pocket Kodak and the line of Bull's Eye Kodaks. They also offered photographic supplies such as films, plate holders and dark room supplies. Over the following years, the photographic offerings in the general catalogues varied: from 1902 to 1904, there were only photographic supplies (no cameras). In 1905 and 1906 there were Ansco cameras. In the spring/summer 1907 catalogue the reader found no cameras, but did find this message: "For cameras and photo goods send for Special Drug Catalogue, as you will want to

take a camera with you on your outing this year." The general Eaton's catalogue began to carry cameras again with the spring/summer 1909 issue. Now Eaton's only listed the cameras that had been specially manufactured for them with their own camera names: the Emerald, the TECO, the Shamrock and the Eagle that you find in this catalogue.

In selling cameras, Eaton's included them with their line of drugs, and it was The T. Eaton Drug Co. Limited that published this camera catalogue. This was likely done since cameras and photographic supplies were a major product line in drug stores at the time.

While this catalogue is not dated, it is possible to date it approximately. The Ticka camera is included, which places the catalogue in the range of 1905 to 1914. This range can be narrowed by comparing the cameras in this catalogue with those in the general Eaton's catalogues. The spring/summer 1910 catalogue was the first to carry two models of the Emerald camera (Nos. 1 and 2), while in the spring/summer 1912 catalogue, the price of the TECO No 5 box camera was reduced from \$5.00 to \$4.00. Thus, this catalogue was likely published in 1910 or 1911.



Originally published by The T. Eaton Drug Co. Limited,
c1910

Facsimile reprint by Photographic Historical Society of
Canada, 1999

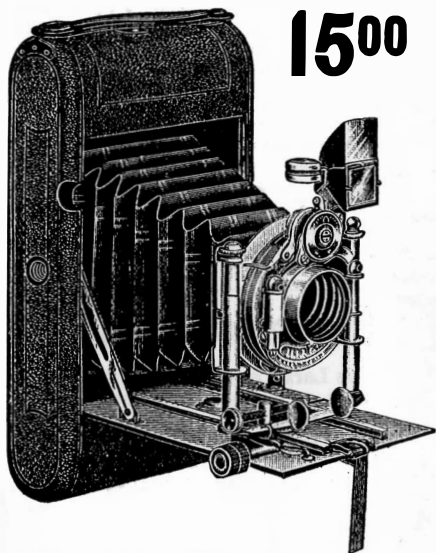
Digital reprint by Photographic Historical Society of
Canada, 2017

Reprint source: www.phsc.ca
Email info@phsc.ca

Emerald Camera No. 1

15⁰⁰

**TAKES
PICTURES
3½ x 4½**



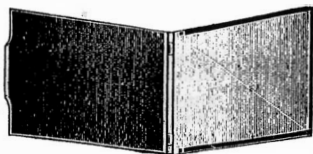
This Camera takes either plates or films, and is one of the most compact of all. It takes a picture 3½ x 4½ inches either vertical or horizontal; for films it has a brilliant view finder, which is adjustable, and has a level combined with it. The body of the camera is made of aluminum, covered in seal grain leather with nickel-trimmings. Everything about the instrument is of the best. The

price of the complete camera is governed by the combination of the lens and shutters which you wish to have put on the instrument. The following explanations of how you may make up a camera to suit yourself is in as condensed a form as we can put it, and the prices as reasonable as it is possible.

V1-A11. Emerald Camera, fitted with a Beck Isostigmat Lens and a Koilos shutter, a rack and pinion for focusing as well as rising and falling, front and right or left side movements. Price..... **35.00**

Plate Holders (aluminum) with

hinge. Price for (1) plate **40c**



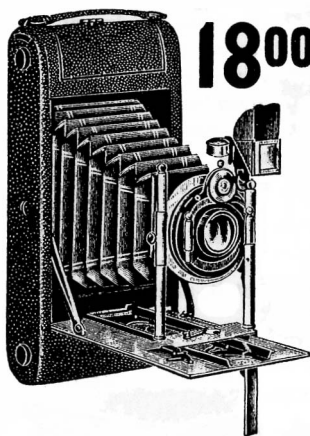
- V1-A29. Emerald Camera, fitted with an Isostigmat Lens (Beck) and a Bausch & Lomb shutter, double valve automatic new; with speeds 1/100th, 1/50th, 1/25th, 1/5th, 1/2, and 1 second, as well as bulb exposure and time, with rack and pinion and all movements. Price..... **30.00**
- V1-A75. Emerald Camera, fitted with a Beck rapid symmetrical lens and a Bausch & Lomb new auto shutter, all speeds as the previous, as well as the movements. Price..... **20.00**
- V1-A76. Emerald Camera, fitted with a Beck rapid symmetrical lens and a Bausch & Lomb Unicum shutter, and all movements as the above. Price..... **18.00**
- V1-A77. Emerald Camera, fitted with a rapid rectilinear lens and a single valve automatic shutter, having all the various speeds and the rack and pinion for focusing, as well as all movements. Price..... **15.00**
- V1-A78. Emerald Camera, fitted with a Simplex shutter and a rapid rectilinear lens. This shutter has only instantaneous bulb and time speeds which for ordinary photography of all landscapes is all that is necessary. Price..... **14.50**

Emerald Camera No. 2

This is for taking pictures postcard size, that is, $3\frac{1}{2} \times 5\frac{1}{2}$ inches; this, as the $3\frac{1}{2} \times 4\frac{1}{4}$ above, is a seal grain covered aluminum body, having rack and pinion movement, rising and falling front and side movements, view finders and levels attached.

V1-A79. Fitted with a Beck rapid symmetrical lens and a Bausch & Lomb new auto shutter. Price	24.00
V1-A80. Fitted with a Beck rapid symmetrical lens and a Bausch & Lomb Unicum shutter. Price	22.00
V1-A81. Fitted with a Bausch & Lomb single valve shutter, having various speeds, and a Beck rapid symmetrical lens. Price	20.00
V1-A82. Fitted with a rapid rectilinear lens and a Bausch & Lomb single valve automatic shutter, having time, instantaneous and bulb exposures only. Price	18.50

The Lark Camera $3\frac{1}{4} \times 4\frac{1}{4}$



The Lark Camera is a film or plate camera as desired; it takes a picture $3\frac{1}{4} \times 4\frac{1}{4}$ inches, and has rising and falling front as well as side movements. This camera is better adapted for film work than for plates, as it has not the rack and pinion movement for focusing. You can also build this camera in the same manner as the Emerald for the following combinations of shutters and lenses.

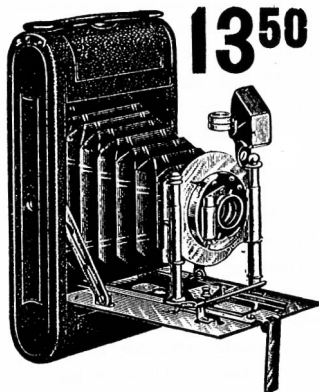
V1-A15. The Lark Camera, fitted with a Beck rapid symmetrical lens and a Bausch & Lomb new auto double valve shutter with all speeds, and a brilliant double action view finder with level attached. Price.....	18.00
V1-A83. Fitted with a Beck rapid symmetrical lens and a Bausch & Lomb Unicum shutter. Price	17.50
V1-A84. Fitted with a Bausch & Lomb single valve auto shutter with various speeds, and a rapid rectilinear lens. Price.....	16.50
V1-A85. Fitted with an auto shutter with time, instantaneous and bulb speed, and a rapid rectilinear lens of good covering power. Price	15.50

The Lark—Post Card Size

The Lark Postcard Camera is similar to the Lark above mentioned, except in size.

V1-A86. Fitted with a Beck rapid symmetrical lens and a Bausch & Lomb new auto shutter; makes one of the best medium priced cameras possible. Price	22.00
V1-A87. Fitted with a Beck rapid symmetrical lens and a Bausch & Lomb Unicum shutter. Price	21.00
V1-A88. Fitted with a Bausch & Lomb single valve auto shutter and a rapid symmetrical lens with various speeds. Price.....	19.50

The Daisy Folding Film Camera



1350

SIZE 3½ x 4½

The Daisy Camera is a very strong, well-made camera of the folding type.

V1-A120. Has brilliant view finder for either vertical or horizontal pictures, rising and falling front and side movements, fitted with a rapid rectilinear lens and a single valve automatic shutter, having various speeds.

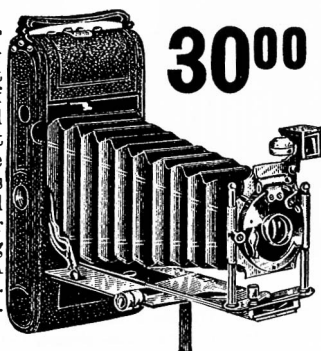
Price **13.50**

V1-A121. Fitted with a rapid rectilinear lens and an automatic shutter, having time, instantaneous and bulb speeds. Price **13.00**

V1-A122. With a rapid rectilinear lens and a simplex shutter, having time, instantaneous and bulb speeds **12.50**

Pearl Double Extension Camera

The Pearl Double Extension Camera takes a picture 2½ by 3½ inches, and is the smallest camera which will take a picture of exceptional merit, it can be used with the double lens or has sufficient length of bellows, whereby the single combination of the back or front lens may be used at will. It has rack and pinion movement for both single or double extension of bellows, rising and falling front as well as side. A brilliant view finder with level attached, so that vertical or horizontal pictures may be taken as desired.



3000

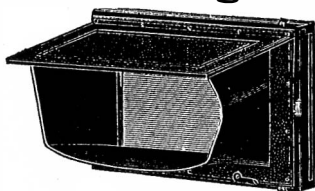
V1-A131. When fitted with an Isostigmat lens and a Koilos shutter it is, par excellence, the Pearl of compact cameras. Price **30.00**

V1-A132. Fitted with a Beck rapid symmetrical lens and a Bausch & Lomb new auto double valve shutter, working at 1/100th, 1/50th, 1/25th, 1/5th, 1/2, and 1 second, as well as at time and bulb control speeds. Price **15.50**

V1-A133. Or with a Beck rapid symmetrical lens and a Bausch & Lomb single valve shutter, working automatically and having various speeds. Price **13.50**

You can use either plates or films in a Pearl Camera,

Focusing Screen and Back

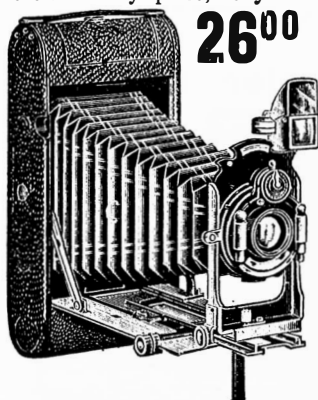


NO CHARGE FOR THIS

V1-A7. Focusing screen and back attached to most of the three above cameras, where practical. This we do not charge for and do not supply to fit other cameras.

Diamond Double Extension Camera

The Diamond Double Extension Camera is without exception the most compact camera for the highest grade of work which the amateur may wish to do ; the bellows is long enough to use the single combination when one wishes to use the back or front lens by itself, or a telephoto attachment ; it has rack and pinion movement for short and long extension of bellows, rising and falling front and side movements, extra rigid base, brilliant view finder, adjustable to vertical or horizontal position, and a level which swings with the finder, so that true lines may be obtained. This camera is covered with seal grain leather, and the metal trimmings are all nickel : the body is made of aluminum, which makes the minimum of weight with the maximum of strength. This camera when fitted with a Koilos shutter and a Beck isostigmat lens cannot very well be bettered at any price, as you have the most rapid shutter made as



well as the best and fastest lens of this class. The brilliancy of some of the pictures which we have seen and the tremendous depth of the perspective ; the general relation of all parts of the subject to each other combined show that these lenses are built on the true laws of transmission of light. We do not think that we can too strongly emphasize the high character of this series of the Beck English manufactured lenses. Size of picture $3\frac{1}{2}$ by $4\frac{1}{4}$ inches.

V1-A123.	With Beck Isostigmat Lens and Koilos shutter.....	40.00
V1-A124.	With New Auto shutter and Beck Rapid Symmetrical Lens	26.00
V1-A125.	With Koilos shutter and Beck Rapid Symmetrical lens	28.00
V1-A126.	With Unicum shutter and Beck Rapid Symmetrical lens	25.00

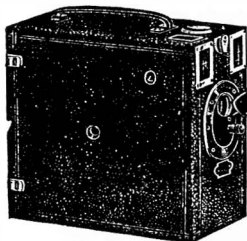
Diamond Double Extension Camera Post Card Size

The Diamond Double Extension Camera, Postcard size, $3\frac{1}{2} \times 5\frac{1}{2}$ inches, is built on exactly the same model as the $3\frac{1}{2} \times 4\frac{1}{4}$ described above.

V1-A127.	The price when fitted with a Beck Isostigmat Lens and Koilos shutter.....	55.00
V1-A128.	Or with a Beck Rapid Symmetrical Lens and a Bausch and Lomb shutter of the New Auto double valve type	36.00
V1-A129.	Or with a Beck Rapid Symmetrical Lens and a Koilos shutter.....	37.50
V1-A130.	Or fitted with a B. and L. single valve shutter of various speeds and a Beck Rapid symmetrical Lens.....	31.75

You can use either plates or films in a Diamond Camera.

Teco Camera No. 2



200 MAKES PICTURES
2½ x 3½

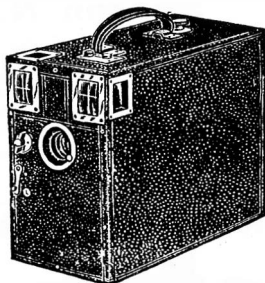
It is the best made camera for the price we've ever seen. **Teco 2** is a roll film camera of the fixed focus box type, taking pictures 2½ x 3½ inches.

- V1-90. Fitted with brilliant view finders. The shutter works at time and instantaneous speeds **2.00**
V1-44. Rolls of film of 6 exposures, per roll **20c**
V1-45. Rolls of film of 12 exposures, per roll **40c**

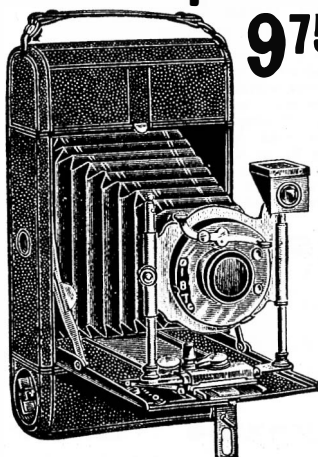
Teco Camera No. 5

Teco 5 is a specially well made camera of the box type. **500**

- V1-05. Fitted with a fixed focus achromatic lens of good definition, having time and instantaneous shutters, two brilliant view finders, and three different diaphragms. Price of camera complete with roll of film of 6 exposures **5.00**
V1-46. Films extra, 6 exposures **30c.**
V1-47. Filmsextra, 12 exposures **60c**



The Alpine No. 1 Camera



975 3½ x 4½

This Camera takes pictures 3½ x 4½ inches, and the body is made of aluminum covered with imitation leather seal grain, and is waterproof; the inside has wooden lining so as to make it very strong and rigid. The fittings are nicked.

- V1-MG16. Fitted with a double periscope lens working at f: 10, and a shutter working on time, instantaneous and bulb speeds; the shutter can be worked either by the finger release or by an antinous release which goes with each camera. You can only use films with this camera. A brilliant view finder which swings on a pivot for either vertical or horizontal pictures is attached to the front of the bellows above the lens. There is a gauge so that you can adjust the distance which you are using as

your principal object, and if you are taking pictures in a hurry you can have it at infinity. Each camera is thoroughly tested before leaving the workshop and again when sold by us to insure you results as far as possible. The price is the least for a camera of this class which we have yet seen, taking quality of lens, workmanship and compactness into account. Price **9.75**
V1-MG10. Without antinous release the price is **8.75**

The Alpine No. 2 Camera

V1-M.G. 27. This is the same as V1-M.G. 16, but fitted with a rectilinear lens working at f:10, and a shutter having various speeds, viz., 1/100th, 1/50th, and 1/25th of a second, as well as time and bulb exposures. It also has an Iris diaphragm. The price without antinous release is 10.00

V1-M.G. 271. With antinous release the price is 11.00

The Sharon Camera No. 1

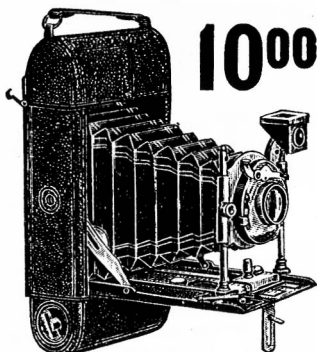
V1-M.K. 16. This camera is similar to the last two, excepting that it is fitted for plates as well as films. As the first one the price is 10.00

Or with antinous release the price is 11.00

Sharon No. 2

V1-M.K. 27. This is also a plate or film camera, same size and style as the last three, but fitted with a similar lens and shutter to the second last. Price without the antinous release is 12.00

Or with the antinous release the price is 13.00



No. 6 Repeater Magazine Camera



125 This is a magazine camera having six metal holders for plates, which take a picture $2\frac{1}{2} \times 3\frac{1}{2}$ inches, and may be taken either vertically or horizontally as desired.

V1-N.T.A. Two view finders are attached to the front of the box near the lens, which is a good brilliant one capable of covering the plate in good perspective; time and instantaneous exposures can be made with the shutter. The body of the camera is of wood covered with seal grain imitation water-proof leather. The Price is 1.25

No. 1 Repeater Magazine Camera

V1-A91. Takes 12 Plates and is fitted with a good brilliant lens; the size of the picture is $2\frac{1}{2}$ by $3\frac{1}{4}$ inches. This is a good strong camera and has a time and instantaneous shutter. The Price is 2.75

No. 2 Repeater Magazine Camera

V1-A92. No. 2 Repeater is similar to No. 1 but takes pictures $3\frac{1}{4} \times 4\frac{1}{4}$ inches and the Price is 3.60

No. 5 Repeater Magazine Camera

V1-E.P.A. Is a Magazine Camera of the box type, taking pictures $3\frac{1}{4} \times 4\frac{1}{4}$ inches, the magazine takes twelve plates and is fitted with 12 metal holders for the plates, two view finders are fitted in the box so that a vertical or horizontal picture may be taken as desired. An Achromatic lens is fitted to this camera and time and instantaneous exposures can be used. The Price of this camera is only 4.00

No. 7 Repeater Magazine Camera

V1-G.P.A. This camera is also of the box type but is fitted with a rectilinear lens; it is a twelve plate magazine plate camera with counters for the plates as they are used, two view finders are fitted so as to take horizontal as well as upright pictures, the body is of wood neatly covered with waterproof material in imitation of seal grain leather. Price..... **7.75**

No. 3 Repeater Magazine Camera

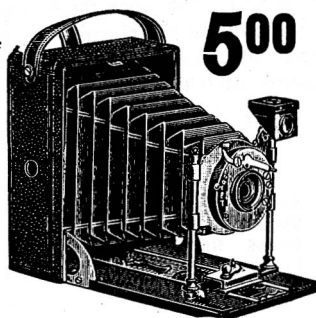
V1-A93. Is for plates $2\frac{1}{4}$ by $3\frac{1}{4}$ inches and is of the magazine box type holding six plates, it is fitted with an achromatic lens of good covering power, two view finders, the shutter works at either time or instantaneous speeds, as required. A lever for changing the plates is in each instrument. There is a magnifying lens attached so as to take pictures of objects as near as three feet. Price..... **5.75**

No. 4 Repeater Magazine Camera

V1-A94. Is similar to No. 3 but has brilliant view finders and an Aplanat Lens. Price..... **6.50**

Folding Plate Cameras Shamrock Camera No. IV.

This is a plate camera taking pictures $3\frac{1}{4} \times 4\frac{1}{4}$ inches, and is made of wood covered with waterproof material, imitation seal grain leather, nickeled fittings.



V1-O.L. 18. Fitted with an achromatic lens and a good shutter working instantaneous, bulb and time exposures. A ground glass is fitted in the back for focusing as well as a brilliant view finder. Two single metal dark slides for plates are with each camera. The shutter is finger release, but an antinous release may be used if desired. The price without the antinous release is..... **5.00**

V1-O.L. 181. Or with the antinous release the price is **6.00**
Extra Single Plate Plate Holders, each..... **40c**

Shamrock Camera No. II.

Shamrock II. Plate Camera is of the compact folding type, and takes pictures $2\frac{1}{2}$ by $3\frac{1}{2}$ inches; is a well-made instrument, neatly covered with waterproof seal grain imitation leather.

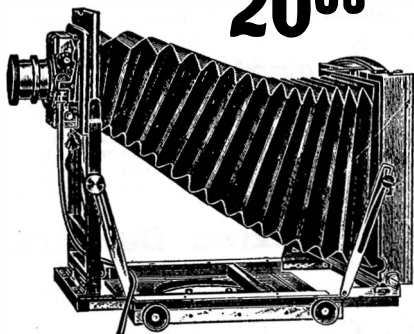
V1-A . Fitted with a good single achromatic lens of good covering power and speed. Complete with two metal plate holders. Price..... **7.75**
Extra Single Plate Plate Holders, each..... **40c**

Shamrock Camera No. III.

V1.1 . **Shamrock III.** is similar to Shamrock II., but is fitted with a double rapid rectilinear lens, complete with two single metal plate holders. Price **9.00**

Eagle Field Camera

2000



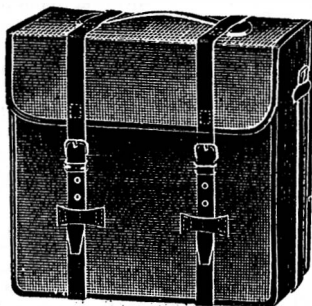
Our field cameras are made of finest Spanish mahogany, hand polished, in $\frac{1}{4}$ plate size, i.e., $3\frac{1}{4} \times 4\frac{1}{4}$ inches; $\frac{1}{2}$ plate, i.e., $4\frac{1}{2} \times 6\frac{1}{2}$ inches; and whole plate, i.e., $6\frac{1}{2} \times 8\frac{1}{2}$ inches. We have the Eagle triple extension for use with the double lens or either the back or front combination. This is a well made camera, the fittings being made of strong well lacquered brass,

with every movement which it is possible to require. Any special lens may be attached to this camera, and all that is required is to get front lens boards when different size lenses are to be used. We quote you prices with the Beck rapid symmetrical Iris lens and the Sanderson roller blind shutter, complete with one double plate holder, tripod three fold, the case is extra, as also the double dark slide plate holders other than the one with the camera.

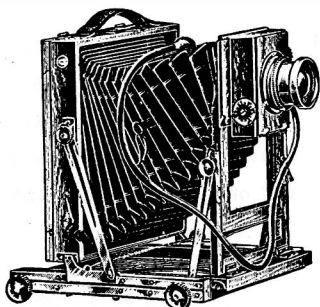
V1-A12. Eagle Camera, $\frac{1}{4}$ plate double extension, complete with Beck Iris lens, Sanderson roller blind shutter, one triple fold tripod, and one double dark slide made of polished mahogany. Price	20.00
V1-A95. Eagle Camera, $\frac{1}{2}$ plate size, complete as $\frac{1}{4}$ plate. Price	27.00
V1-A96. Eagle Camera, whole plate, complete as $\frac{1}{4}$ plate. Price	35.00
V1-A97. Quarter Plate Double Dark Slides, finest mahogany, each	2.10
V1-A98. Half Plate Double Dark Slides, finest mahogany, each	2.50
V1-A99. Whole Plate Double Dark Slides, finest mahogany, each	4.00

Cases for Field Cameras

V1-A100. Quarter Plate Solid Leather Black Camera Case	2.25
V1-A101. Half Plate Solid Leather Black Camera Case	2.75
V1-A102. Whole Plate Solid Leather Black Camera Case	4.00
V1-A103. Quarter Plate No. 1 Stiff Canvas Camera Case	1.90
V1-A104. Half Plate No. 1 Stiff Canvas Camera Case	2.25
V1-A105. Whole Plate No. 1 Stiff Canvas Camera Case	2.65
V1-A106. Quarter Plate No. 4 Stiff Canvas Camera Case	85c
V1-A107. Half Plate No. 4 Stiff Canvas Camera Case	1.25
V1-A108. Whole Plate No. 4 Stiff Canvas Camera Case	1.65
V1-A109. Quarter Plate No. 6 Tan Mail Cloth Camera Case, baize lined	60c
V1-A110. Half Plate No. 6 Tan Mail Cloth Camera Case, baize lined	7.58
V1-A111. Whole Plate No. 6 Tan Mail Cloth Camera Case, baize lined ...	7.58



The Falcon Camera

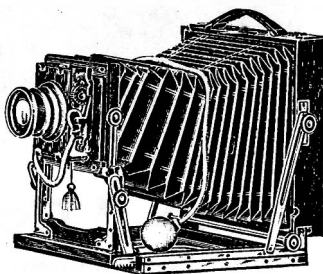


This is a very fine field camera, but is not quite finished so highly as the Eagle; it has a double extension bellows and has a triple fold tripod; the lens and shutter are the same as the half-plate Eagle. It is well made serviceable strong camera.

- V1-A151. The $\frac{1}{2}$ Plate Falcon Camera, complete, with one double Spanish mahogany plate holder with three-fold tripod Beck rapid symmetrical Iris lens and Sanderson roller blind shutter. Price.. **21.00**
 V1-A152. Double Dark Slides for $\frac{1}{2}$ plate Falcon Camera, each **2.25**

The Condor Field Camera

This has a double extension bellows, and the body is made of good well polished mahogany, solidly constructed, fitted with a Beck rapid symmetrical Iris lens and a Sanderson roller blind shutter. The $\frac{1}{4}$ and half plate cameras are furnished with a two-fold tripod, while the whole plate has a three-fold tripod. One mahogany well-polished double dark slide plate holder is with each outfit. The cases are extra.



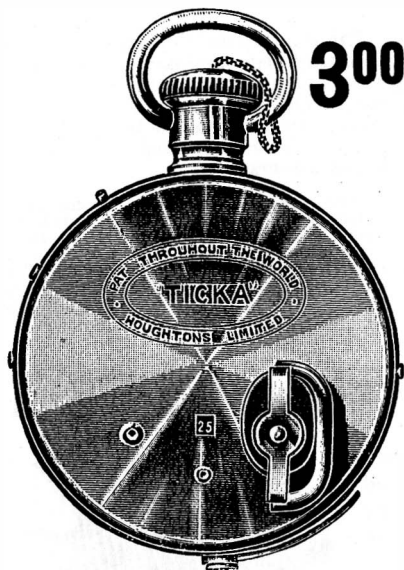
- V1-A153. Quarter Plate Condor Field Camera, as above **17.00**
 V1-A154. Half Plate Condor Field Camera, as above **19.00**
 V1-A155. Whole Plate Condor Field Camera, as above **25.00**

Double Dark Slides for Condor Field Camera

- V1-A156. Quarter Plate **1.50**
 V1-A157. Half Plate..... **2.00**
 V1-A158. Whole Plate **3.25**
 V1-A159. Extra Lens Front Boards for quarter, half or whole plate cameras, each **50c**
 V1-A160. Sanderson Time Indicator, which can be inserted in any tube of a bulb release camera such as the Sanderson roller blind ; attached to all our field cameras of this season, viz., Eagle, Falcon or Condor. Price, each..... **75c**

For Carrying Cases for Field Cameras see under heading Eagle Cameras. These cases hold camera, lens and shutter, together with three double plate holders, as a general rule.

"Ticka" Watch Camera



300

This wonderful little instrument is only the size of a large watch but it does splendid work. It takes a roll of film which will give you 25 exposures.

VI-A113. This year we have them done up in cases with camera, view-finder and roll of film complete for **3.00**

VI-A114. Extra roll of films for taking 25 pictures **20c**

VI-A115. "Ticka" printing frame **15c**

The "Ticka" Outfit

VI-112. A "Ticka" watch pocket camera and a complete outfit make an attractive and a welcome present to anybody. "Ticka" cameras were an immense success last season in England, and promise to be very popular here this summer. The full size illustration represents the "Ticka" as it looks. Price for the outfit **3.00**



No. 2 Klito Daylight Reducer

Reduces from 4 x 5 to 3½ x 3¼.

No. 3 Klito Daylight Reducer

Reduces from 6½ x 4½ to 3½ x 3¼

No. 2.....**3.40** No. 3.....**3.75**

Photographic Plates

	2-5/16 x 1 3/4	2 1/2 x 2 1/2	3 1/2 x 2 1/2	3 1/2 x 3 1/2	3 1/4 x 4 1/4	4x5	3 1/2 x 5 1/2	3 1/4 x 6 3/4	4 3/4 x 6 1/2	5x7	6 1/2 x 8 1/2	8x10
V1-A400. Wellington Plates Speedy	15c	20c	25c	30c	30c	50c	50c	60c	65c	90c	1.15	1.90
Wellington Plates Isochromatic Speedy	15c	20c	25c	30c	30c	50c	50c	60c	65c	90c	1.15	1.90
V1-A401. Paget Prize Plates Special Rapid	15c	20c	25c	30c	30c	50c	50c	60c	65c	90c	1.15	1.90
Paget Prize Plates Extra Special Rapid	15c	20c	25c	30c	30c	50c	50c	60c	65c	90c	1.15	1.90
Paget Prize Plates Orthochromatic Special Rapid	15c	20c	25c	30c	30c	50c	50c	60c	65c	90c	1.15	1.90
Paget Prize Plates Swift	—	—	—	—	40c	60c	60c	—	90c	—	—	—
V1-A402. Wellington Plates Watalu*	—	—	—	—	40c	60c	60c	—	90c	—	—	—
Imperial Plates Special Sensitive	—	—	—	—	35c	55c	—	—	70c	1.15	—	—
Imperial Plates Orthochrome	—	—	—	—	35c	55c	—	—	70c	1.05	—	—

* Water only required for development ; non-halative, owing to the compound with which the back of the plate is coated. This backing contains all necessary chemicals to form an efficient developer, which gradually dissolves as development proceeds.

Lantern Plates—V1-A403. Wellington.....25c V1-403. Paget.....25c

Photographic Printing Papers

	2½x3½	3½x3½	3¼x4¼	4x5	3½x5½	4¾x6½	7½x5 7x5	6½x8½	8x10	10x12
V1-A390. Wellington, Slow Contact Paper Matt, Glossy, Porcelaine, Carbon Semi-Matt For night printing.	Packets 34 Sheets 25c	14 Sheets 15c 28 Sheets 25c	12 Sheets 15c 24 Sheets 25c	9 Sheets 15c 18 Sheets 25c	9 Sheets 15c 18 Sheets 25c	6 Sheets 15c 12 Sheets 25c	12 Sheets 30c	12 Sheets 50c	12 Sheets 70c	—
V1-A391. Wellington Bromide Paper Smooth, Rough, Carbon and Cream Crayon	Ditto	Ditto	Ditto	Ditto	Ditto	Ditto	Ditto	Ditto	Ditto	3 Sheets 30c 6 Sheets 55c
V1-A392. Wellington Printing-out-Paper Matt or Glossy For daylight printing.	—	20 Sheets 15c 40 Sheets 25c	18 Sheets 15c 36 Sheets 25c	12 Sheets 15c 24 Sheets 25c	12 Sheets 15c 24 Sheets 25c	8 Sheets 15c 16 Sheets 25c	13 Sheets 25c	9 Sheets 25c	6 Sheets 25c	—
V1-A393. Wellington Self-Toning P.O.P Matt or Glossy	—	14 Sheets 15c 28 Sheets 25c	12 Sheets 15c 24 Sheets 25c	9 Sheets 15c 18 Sheets 25c	—	6 Sheets 15c 12 Sheets 25c	11 Sheets 25c	7 Sheets 25c	4 Sheets 25c	—
V1-394. Argo Paper Matt, Gloss and Lustre Gas light printing.	—	12c doz 1.20 gross	12c doz 1.20 gross	15c doz 1.50 gross	15c doz 1.50 gross	25c doz 2.70 gross	30c doz 3.00 gross	50c doz 5.00 gross	—	—
V1-395. Cyko Paper. Semi-matt, Glossy or Studio (Grades Normal and Contrast) Gas light printing.	—	Ditto	Ditto	Ditto	Ditto	Ditto	Ditto	Ditto	—	—

Photographic Printing Papers—Continued.

	$2\frac{1}{2} \times 3\frac{1}{2}$	$3\frac{1}{2} \times 3\frac{1}{2}$	$3\frac{1}{4} \times 4\frac{1}{4}$	4 x 5	$3\frac{1}{2} \times 5\frac{1}{2}$	$4\frac{3}{4} \times 6\frac{1}{2}$	5 x 7	$6\frac{1}{2} \times 8\frac{1}{2}$	8 x 10	10 x 12
V1-A397. Paget Prize Self-Toning	—	13 Sheets 15c	10 Sheets 15c	16 Sheets 25c	16 Sheets 25c	10 Sheets 25c	8 Sheets 25c	6 Sheets 25c	6 Sheets 36c	—
Paget Prize Printing Out Paper.	Packets 34 Sheets 25c	14 Sheets 15c 28 for 25c	12 Sheets 15c 24 for 25c	9 Sheets 15c 18 for 25c	9 Sheets 15c 18 for 25c	6 Sheets 15c 12 for 25c	12 Sheets 30c	12 Sheets 50c	12 Sheets 70c	—
Paget Prize Simplex Self-Toning Paper.	Packets 20 Sheets 15c	—	12 Sheets 15c 28 Sheets 25c	10 Sheets 15c 21 Sheets 25c	10 Sheets 15c 21 Sheets 25c	12 Sheets 25c	10 Sheets 25c	—	—	—
Paget Prize Gravura Gaslight Paper. No. 1—Matt, Glossy and Satin Surfaces, for ordinary negatives, black tones only. No. 2 for colors from olive brown to red chalk. Black tones can	20 Sheets 15c	14 Sheets 15c	12 Sheets 15c 24 Sheets 25c	18 Sheets 25c	18 Sheets 25c	12 Sheets 25c	6 Sheets 25c	6 Sheets 25c	6 Sheets 35c	6 Sheets 50c

Bromide Paper. In smooth, rough and cream crayon; also glossy satin surface and extra smooth. The distinctive feature of this paper is its latitude of exposure without alteration of tone.	$6\frac{1}{2} \times 8\frac{1}{2}$	8 x 10	10 x 12	12 x 15	15 x 18	17 x 23
	6 Sheets 25c 12 Sheets 50c	4 Sheets 25c 12 Sheets 75c	3 Sheets 25c 6 Sheets 50c	6 Sheets 75c 12 Sheets 1.50	6 Sheets 1.15	6 Sheets 1.50

Non-Curling Films

Wellington, Barnet, Ensign and Ansco

V1-A316.	1½ x 2 —12 Ex.	Adapted to Pocket Kodak	25c
V1-A317.	1½ x 2½ — 6 Ex.	Adapted to No. 0 Folding Pocket Kodak	15c
V1-A318.	1½ x 2½ —12 Ex.	" " " " " " " "	25c
V1-A319.	2¼ x 2¼ — 6 Ex.	For No. 1 Buster Brown and adapted to No. 1 Brownie.....	15c
V1-A321.	2¼ x 3¼ — 6 Ex.	For No. 2 and No. 3 Buster Brown, No. 1 Folding Buster Brown, adapted to No. 2 Brownie.....	20c
V1-A322.	2¼ x 3¼ — 6 Ex.	Adapted to No. 1 Folding Pocket Kodak	20c
V1-A323.	2½ x 4¼ — 6 Ex.	For Ansco Jr., adapted to No. 1A Folding Pocket Kodak	25c
V1-A324.	3¼ x 4¼ — 6 Ex.	For Nos. 2, 4 and 6 Ansco, adapted to No. 3 Folding Pocket Kodak	35c
V1-A325.	3¼ x 4¼ — 6 Ex.	Adapted to No. 3 Folding Brownie.....	35c
V1-A326.	3½ x 3½ — 6 Ex.	For No. 1 Ansco, adapted to No. 2 Bullet, No. 2 Bulls-Eye, No. 2 Flexo, and No. 2 Folding Pocket Kodak and 3B Al-Vista.....	30c
V1-A327.	4 x 5 — 6 Ex.	For Nos. 3, 5, 7 and 8 Ansco, adapted to No. 4 Bullet. No. 4 Bulls-Eye, also No. 4 Panoram Kodak and 4B Al-Vista.....	45c
V1-A328.	4¼ x 3¼ — 6 Ex.	Adapted to No. 3 Cartridge Kodak.....	35c
V1-A329.	5 x 4 — 6 Ex.	Adapted to No. 4 Cartridge Kodak, and 5B, 5C, 5D or 5F Al-Vista.....	45c
V1-A330.	7 x 5 — 6 Ex.	Adapted to No. 5 Cartridge Kodak, 7D, 7E or 7F Al-Vista.....	80c
V1-A331.	3¼ x 5½ — 6 Ex.	For Nos. 9 and 10 Ansco, adapted to No. 3A Folding Pocket Kodak	40c
V1-A332.	3¼ x 5½ —10 Ex.	For Nos. 9 and 10 Ansco, adapted to No. 3A Folding Pocket Kodak	70c
V1-A333.	3¼ x 5½ — 6 Ex.	Adapted to No. 2 Stero Brownie and 3B Quick Focus Kodak.....	40c
V1-334.	3¼ x 5½ —10 Ex.	Adapted to No. 2 Stero Brownie and 3B Quick Focus Kodak	70c
V1-A335.	4¼ x 6½ — 6 Ex.	Adapted to No. 4A Folding Kodak	65c

Developing and Toning Solutions

V1-A300.	Metal Hydrochinone, one of the finest and most satisfactory developers for bromide and night printing papers, films and plates, 8 oz. bottle.....	15c
V1-A301.	Pyrogallie Acid Developer, soda or potash as desired, 2 solutions, 8-oz. and 4-oz. bottles for.....	25c
V1-A302.	Pyrogallie Acid and Metol Developer for short exposures, 3 solutions, 8-oz. bottle of each	35c
V1-303.	Metol and Hydrochinone Developer, 2 solutions, 3-oz. bottle of each.....	30c
V1-A304.	Eikonogen Hydrochinone Developer, 16-oz. bottle	30c
V1-A305.	Metol Bicarbonate Developer, 16-oz. bottle	30c
V1-A306.	Bromo-hydrochinone Developer, 8-oz. bottle	30c
V1-A307.	Intensifying Solutions, 2 8-oz. bottles, each	30c
V1-A308.	Reducing Solutions, 2 solutions, 8-oz. bottle of each	25c
V1-A309.	Clearing Solution, 16-oz. bottle	15c
V1-A310.	Gold Toning Solution Acid, 15-dram bottle	60c
V1-A311.	Gold Toning Solution Borax, 15-dram bottle	60c
V1-A312.	Combined Toning and Fixing Solution, bottle	25c
V1-A313.	Eikonogen and Hydrochinone Solution, 16-oz. bottle	30c
V1-A314.	8-oz. bottle Metol Quinol	15c
V1-A315.	16-oz. bottle Eikonogen Solution	30c

The solutions being of distilled water cannot be shipped during cold weather, and in consequence would recommend the dry chemicals during the severe winter months.

Developing Tabloids

Burroughs Welcomes' English

V1-A366.	Tabloids Amidol Developer.....	35c
V1-A366.	" Eikonogen Developer.....	35c
V1-A367.	" Glycin Developer.....	35c
V1-A368.	" Hydroquinone Developer.....	35c
V1-A369.	" Metol Developer.....	35c
V1-A370.	" Metol Quinol Developer.....	35c
V1-A371.	" Ortol Developer.....	35c
V1-A372.	" Pyro Developer.....	35c
V1-A373.	" Pyro Metol Developer.....	35c
V1-A374.	" Pyro Soda Developer.....	35c
V1-A375.	" Alkali, 22 in bottle.....	15c
V1-A376.	" Clearing and Hardening, 30 in bottle.....	15c
V1-A377.	" Density Reducers, ammonia, per bottle.....	15c
	Sulphate, 15 in tube.....	15c
V1-A378.	" Density Reducers, Potassium Ferrocyanide, 22 in tube.....	15c
V1-A379.	" Intensifiers, 15 in tube.....	15c
V1-A380.	" Hypo Eliminators, 15 in tube.....	25c
V1-A381.	" Restrainers, Potassium Bromide, 30 in tube.....	15c

Tabloid Toners

Burroughs Welcome

V1-A382.	Tabloids Gold Chloride and Borax, cartons.....	35c
V1-A383.	" " " and Soda Bicarbonate.....	35c
V1-A384.	" " " and Sodium Tungstate.....	35c
V1-A385.	" " " with Sulpho-cyanide Compound.....	35c
V1-A386.	" Combined Toning and Fixing.....	35c

Johnson's Guaranteed Gold Chloride

V1-A986. Every tube bears the Red J. & S. Guarantee Label, per Tube 65c

Johnson's 'Scale Brand' Cartridges

V1-A360. Amidol, Hydrochinone, Metol, Metol-Quinol, Ortol-Soda, Pyro-Metol, Pyro-Soda, Gold Toning, Toning and Fixing, Reducer, Intensifier, etc. Price per cartridge, 4 for..... 25c

Johnson's 'Scaloids' Photographic Tablets

V1-A363.	Amidol, Metol-Quinol, Pyro-Soda, Hydrochinone, Gold Toning, Toning and Fixing, etc., per box.....	25c
V1-A364.	Intensifier, Reducer, Restrainer, etc., per box.....	15c

Johnson's 'Scale Brand' Packets

V1-A361.	Metol-Quinol, Pyro-Soda, etc., per packet.....	5c
V1-A362.	Gold Toning and Fixing, per packet, each.....	5c

Chemicals

V1-A336.	Pyrogallie Acid, per oz.....	30c
V1-A337.	Hydrochinone, per oz.....	25c
V1-A338.	Eikonogen, per oz.....	40c
V1-A339.	Metol, per oz.....	75c
V1-A340.	Amidol, per oz.....	75c
V1-A341.	Platinum Chloride, 15 grain tubes, each.....	60c
V1-A342.	Gold Chloride, pure, 15 grain tubes, each.....	65c
V1-A343.	" " and Sodium, 15 grain tubes, each.....	35c
V1-A344.	Sulphite of Soda, per lb.....	15c
V1-A345.	Hyposulphite of Soda, per lb.....	5c
V1-A346.	Carbonate of Soda, per lb.....	15c
V1-A347.	Sal Soda, 3 lbs. for.....	5c
V1-A348.	Bromide of Potassium, per oz.....	5c
V1-A349.	Carbonate of Potash, per lb.....	20c
V1-A350.	Borax, powdered, per lb.....	7c
V1-A351.	Red Prussiate of Iron, per oz.....	5c
V1-A352.	Acetate of Soda, per oz.....	10c
V1-A353.	6 tubes Hydro-Metol.....	25c

Johnson's Acid Fixing Powder

V1-A854. 1/4-lb. tins 10c V1-A355. 1/2-lb. tins 15c V1-A356. 1-lb. tins 25c
V1-A387. Hyposulphite of Soda, per lb., 5c 6 lbs. for 25c

Postcards, 5½ x 3½

Printing Out—Wellington.

V1-A405. Matt.....	15c per doz.	Per gross.....	1.45
V1-A406. Mauve (glossy) ...	15c per doz.	Per gross.....	1.45
V1-A407. Self-toning matt	25c per doz.	Per gross.....	2.15
V1-A408. Self-toning, glossy	25c per doz.	Per gross.....	2.15

Printing Out—Paget Prize P. O. P.

V1-A409. Matt.....	15c per doz.	Per gross.....	1.45
V1-A410. Glossy.....	15c per doz.	Per gross.....	1.45
V1-A411. Simplex.....	15c ¼ doz.	Per gross.....	2.15

Gaslight—Wellington S. C. P.

V1-A412. Matt.....	25c per 1½ doz. }		
V1-A413. Glossy.....	25c per 1½ doz. }		2.15

Paget Prize Gravura..... 25c per 1½ doz. 2.15

V1-A414. Argo—Matt	} 15c per doz.	Per gross.....	1.50
Glossy			
Velours.....			
V1-A415. Cyko.....	} 15c per doz.	Per gross.....	1.50
Glossy			
Semi-matt.....			
Studio			

Enlarging Apparatus

Every Enlarger is sent out **complete** with Book of **Instructions**, packet of **Bromide Paper** and suitable **Developer**.

No. 2 MASCOT DAYLIGHT ENLARGER

V1-A490. Will enlarge from 3¼x4¼ to 6½x8½ and 3½x2½ to 6½x4¼	
Price	1.75

No. 2. BRITON DAYLIGHT ENLARGER

V1-A491. With removable wooden dark slide. Same size as No. 2 Mascot Enlarger, but made of wood throughout. Price	2.25
---	------

No. 4 BRITON DAYLIGHT ENLARGER

V1-A492. As No. 2 Briton Enlarger, but will enlarge from 3¼x4¼ to 10x12 or 2½x3½ to 6½x8½. Price	3.75
--	------

No. 2 KLITO DAYLIGHT ENLARGER

V1-A493. Made entirely of wood, and covered with leather grain material, with removable wooden dark slide, will enlarge from 3¼x4¼ to 6½x8½ or 2½x3½ to 4¼x6½. Price	3.75
--	------

No. 3 KLITO DAYLIGHT ENLARGER

V1-A494. Description as above, but enlarging from 4x6 to 8x10 or 3¼x4¼ to 6½x8½. Price	5.25
--	------

No. 5A KLITO DAYLIGHT ENLARGER

V1-A495. Will enlarge from postcard size, 3½x5½ to 8x12. Price ..	8.25
---	------

N.B.—Nos. 2 and 3 Klito Enlargers are fitted with Double Lenses.

No. 2B HOLBORN DAYLIGHT FOLDING ENLARGER

V1-A496. With loose wooden dark slide, will enlarge from $3\frac{1}{4} \times 4\frac{1}{4}$ to $6\frac{1}{2} \times 8\frac{1}{2}$. Price **4.00**

THE ENSIGN-AUTO DAYLIGHT ENLARGER, REDUCER AND CAMERA

V1-A497. For enlargements and lantern slide reductions. Enlarges from all sizes up to $3\frac{1}{4} \times 4\frac{1}{4}$ to all sizes up to $6\frac{1}{2} \times 8\frac{1}{2}$. Reduces from $8\frac{1}{2} \times 6\frac{1}{4}$ or $6\frac{1}{2} \times 4\frac{1}{4}$ to $3\frac{1}{4} \times 3\frac{1}{4}$. Price **12.50**

THE COMBINATION ENLARGING LANTERN MODEL A

V1-A498. For use in conjunction with any **Folding Hand Camera**, $3\frac{1}{4} \times 4\frac{1}{4}$, fitted with best quality $5\frac{1}{2}$ in. condenser and oil lamp. Will enlarge to any size. Price **10.00**

MODEL B

V1-A499. As above, but fitted with Russian iron lantern, body and fittings, to take either incandescent or **electric arc lamp**. Price **10.00**

MODEL 3B

V1-A500. As above, but fitted with $8\frac{1}{4}$ -in. Double Plano Convex Condenser, will enlarge from $4\frac{3}{4} \times 6\frac{1}{2}$ to any size. Price **20.00**

THE TUDOR ENLARGING LANTERN

MODEL B

The Tudor Enlarging Lantern (Model B) is scientifically constructed and capable of turning out work of the **highest technical excellence**.

V1-A501. **No. 1B.**— $3\frac{1}{4} \times 4\frac{1}{4}$. Complete with $5\frac{1}{2}$ -inch condenser and best quality portrait lens. Price **20.00**

V1-A502. **No. 1BB.**—Exactly as No. 1B, but fitted with Aldis Anastigmat Lens, Series II., No. 2 F6. Price **24.00**

V1A-503. **No. 2B.**— $x5$ or $3\frac{1}{2} \times 5\frac{1}{4}$ (Postcard). Complete with $6\frac{1}{2}$ -in. condenser and best quality portrait lens. Price **25.00**

V1-A504. **No. 3B.**— $6\frac{1}{2} \times 4\frac{3}{4}$. Complete with $8\frac{1}{4}$ -inch condenser and best quality portrait lens. Price **35.00**

Lantern Accessories

V1-A505. Beard's Eclipse Carriers.....	3.00
V1-A506. Kilito Spot Binders, per box	25c
V1-A507. Slide Binding Clamps	25c
V1-A508. Slide Binding Press	15c
V1-A509. Slide Binders, "Imperial"	15c
V1-A510. " " "	25c
V1-A511. Slide Binders, Wormald's	25c
V1-A512. Cover Glasses, good quality, $3\frac{1}{4} \times 3\frac{1}{4}$, per 144	1.00
V1-A513. " " best quality, per 144.....	1.75
V1-A514. Rendell's Lantern Slide Printing Frames	90c
V1-A515. Tinted Cover Glasses, per box of 5	35c
V1-A516. Combination Cover Glasses and Spot Binders, per dozen.....	30c

The above are a few of the better known Lantern Specialties which we stock. If you are interested send for further information in regard to Lanterns and Sundries.

Photographic Dishes

	3½ x 4½	4 x 5	5 x 7	7 x 9	8 x 10	13 x 11
V1-A416 Finest White Porcelain , semi-deep.	25c	35c	40c	50c		1.00
V1-A417. Xylonite , suitable for travelling.	12½c	15c	20c		40c	
V1-A418. Glass , white, brown, green, blue.		15c	25c	40c		
V1-A419. Composite Dishes .		10c	18c		40c	

Graduated Measuring Glasses

V1-A420. 2 oz. 5c

V1-A421. 4 oz. 5c

V1-A422. 8 oz. 15c

V1-A423. 16 oz. 20c

V1-A424. 32 oz. 30c

Best Quality

V1-A425. 2 oz. 30c

V1-A426. 4 oz. 35c

V1-A427. 8 oz. 50c

V1-A428. 16 oz. 65c

V1-A429. 20 oz. 85c

V1-A430. 32 oz. 85c

V1-A431. 40 oz. 1.25

Glass Funnels

V1-A432. 15c

V1-A433. 20c

V1-A434. 30c

Porcelain Funnels

Just the thing to fit narrow-mouthed bottles 5c and 10c

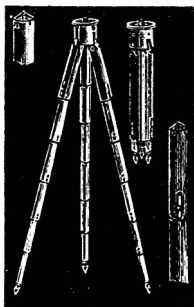


Scales, Complete with Grain Weights and Scruples

V1-A435.	35c
V1-A436.	75c
V1-A437.	1.00
V1-A438.	1.50
V1-A439.	2.25
V1-A440.	3.00

Photo Paste

V1-A444. Eaton's Photo Paste in tubes	5c
V1-A445. Higgin's Photo Paste in bottles	15c
V1-A446. Higgin's Photo Paste in bottles	25c
Johnson's Mountant	10c
Johnson's Mountant, large	20c



Wooden Tripods

V1-A161. Two Fold Tripod. whitewood.....	75c
V1-A162. Two Fold Tripod, English ash.....	1.25
V1-A163. Two Fold Tripod. maple.....	1.00
V1-A164. Three Fold Tripod, English ash.....	2.50
V1-A165. Three Fold Tripod, lighter than A164, for cyclists, etc.....	2.25
V1-A166. Three Fold Tripod, polished maple, light, for cyclists, etc.....	2.00
V1-A167. Four Fold Ash Tripod, very compact,	2.50
V1-A168. Is a well finished rule jointed, with sliding leg, three length, best English ash.....	2.50

Aluminum Tripods

V1-A70C. Is a seven length, polished aluminum tripod with ordinary top, closes to 11 inches and opens to 49 inches, weighing only 11 ounces.

Price **4.00**

V1-100A. Is a five length, triangular, sliding leg tripod of telescoping tubes extending from 14½ to 50 inches made of polished aluminum, with a movable top for adjusting camera without moving tripod.

Price **6.00**

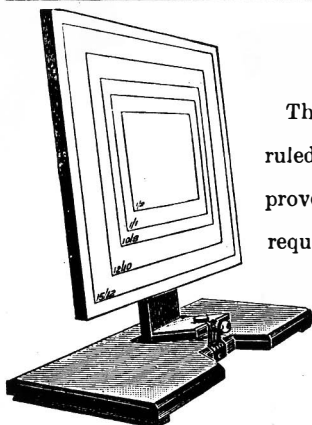
V1-100B. Extending from 14½ to 50 inches, is similar to 100A, but has a brass cast top and the outer sheath is black. Price **6.00**



Metal Tripods

Telescopic, 14½ to 54 inches, brass, steel, aluminum, etc., as follows:

V1-A169. Steel tube, five length, black sheath. Price.....	1.80
V1-A170. 42R Telescopic, 14½ to 51 inches, is a five length tripod, with black sheath, with table on top to straighten camera without changing the tripod itself; the tubes are made of brass. Price	3.25
V1-A171. 42B Telescopic, 14½ to 52 inches, is the same as 42 R, but tubes are nickel plated. Price.....	3.50



Enlarging Easels

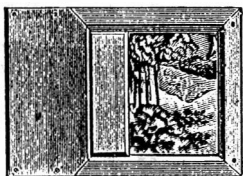
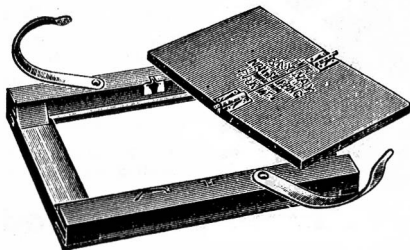
The front of board is covered with paper ruled off from 3¼ x 3¼ upwards, with improved arrangement for tilting, etc., to meet requirements of negative.

V1-A204. Size 13x16 inches, each	2.50
V1-A205. Size 18x24 inches, each	3.50
V1-A206. 17x21 inches	3.00

Printing Frames

The "Jaynay" Non Slip Printing Frames. This frame has been invented to overcome a fault which every photographer has experienced by the slipping of the print during examination whilst printing.

V1-A171.	2 1/4 x 2 1/4 in.	17 1/2 c	each.
V1-A172.	2 1/2 x 2 1/2 in.	17 1/2 c	each.
V1-A173.	3 1/2 x 2 1/2 in.	17 1/2 c	each.
V1-A174.	3 1/2 x 3 1/2 in.	17 1/2 c	each.
V1-A175.	3 1/4 x 4 1/4 in.	17 1/2 c	each.
V1-A176.	4 x 5 in.	25 c	each.
V1-A177.	4 3/4 x 6 1/2 in.	35 c	each.
V1-A178.	5 x 7 in.		each.

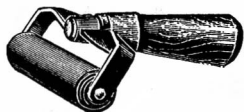


V1-A179.	6 1/2 x 8 1/2	60 c	each
V1-A180.	8 x 10 inches	1.00	each
V1-A181.	10 x 12 inches	1.50	each
V1-A182.	"Jaynay" reversible postcard printing frames.	Price.....	25 c each

Ordinary Printing Frames

V1-A183.	4 x 5 inches, American pattern	20 c
V1-A184.	5 x 7 inches, American pattern	30 c
V1-A185.	Quarter Plate, very strong and serviceable	40 c
V1-A186.	4 x 5 inches, very strong and serviceable	45 c

Squeegee Rollers The Jaynay

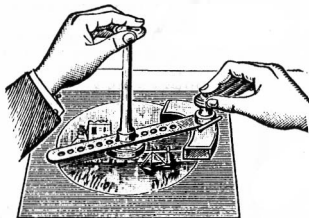


V1-A190.	4 inch,	25 c
V1-A191.	5 inch,	30 c
V1-A192.	6 inch,	40 c
V1-A193.	Squeegee, 4 inch only.	20 c
V1-A194.	Squeegee Roller Professional, 6 inch	75 c

Jaynay No. 2

V1-A195. The "Jaynay" No. 2 Circular print cutter, each..... 75c

V1-A196. Extra cutters for No. 2 circular print cutter, per doz..... 30c



Print Trimming Boards



The base is made of polished hardwood with guide rule projecting above the surface, while the cutters are made of finest tempered steel.

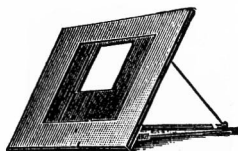
V1-A200.	5 inch size	75 c
V1-A201.	7 inch size	1.00
V1-A202.	9 inch size, each	1.50

Draining Racks

V1-A203. To hold any size of negative up to whole plate, made of hardwood, French polished, with metal frames, neat, strong and compact. Price each 25c



Jaynay Spotting Desk



V1-A207. $\frac{1}{4}$ Plate. reversible. each.....	60c
V1-A208. $\frac{1}{2}$ Plate and $\frac{1}{4}$ Plate reversible, ea	1.00
V1-A209. The "Jaynay" patent floating clip for stand development of films and washing and drying prints. Price per box, set of six.....	30c

Print and Plate Washers

The Circu.—Entirely a new form of plate washer. Plates rotate by the action of water entering the side of washer.

Each washer holds 24 plates.

Plates are thoroughly washed in a few minutes. When the rack and holder part is removed it forms a most suitable **Print Washer.**

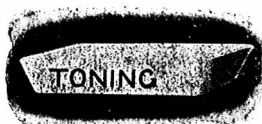
Enamelled white inside and black japanned outside.

V1-A211. $3\frac{1}{4} \times 4\frac{3}{4}$	2.00	V1-A212. 4x5	2.50
V1-A213. $6\frac{1}{2} \times 4\frac{3}{4}$	2.85	V1-A214. $6\frac{1}{2} \times 8\frac{1}{2}$	4.00
V1-A215. Extra (set of racks holding six plates each).....			70c

Quarter Plate Circular Washers

V1-A216. 4x5 plate circular washers.....	2.50
V1-A217. $4\frac{3}{4} \times 6\frac{1}{2}$ plate circular washers.....	2.85
V1-A218. $6\frac{1}{2} \times 8\frac{1}{2}$ plate circular washers.....	4.00
V1-A219. 5x7, set of racks	70c
V1-A220. $\frac{1}{4}$ Plate, set of racks	70c
V1-A221. 4x5 set of racks.....	70c

Toning and Developing Dishes



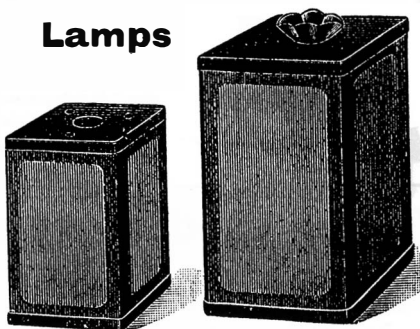
V1-A222. $\frac{1}{4}$ Plate Zinc Stand Development Tanks and Racks.....	75c
V1-A223. 4x5 Plate Zinc Stand Development Tanks and Racks.....	1.00
V1-A224. $4\frac{3}{4} \times 6\frac{1}{2}$ Plate Zinc Stand Development Tanks and Racks.....	1.35
V1-A225. 5x7 Plate Zinc Stand Development Tanks and Racks.....	1.60
V1-A226. 4x5 Plate German Silver Stand Development Tanks and Racks.....	2.10
V1-A227. $3\frac{1}{4} \times 4\frac{3}{4}$ German Silver Stand Development Tanks and Racks.....	1.60
V1-A231. Washers 30c. V1-A232. Washers, each 45c. V1-A233. Washers.....	75c
V1-A234. $\frac{1}{4}$ Plate Racks for washing.....	90c

V1-A235. $\frac{1}{4}$ Plate Enamelled Dishes, each	25c
V1-A236. 4x5 Plate Enamelled Dishes, each	35c
V1-A237. 5x7 Plate Enamelled Dishes, each	40c
V1-A238. $6\frac{1}{2} \times 8\frac{1}{2}$ Plate Enamelled Dishes, each	60c
V1-A239. 10x12 Plate Enamelled Dishes, each	1.00
V1-A240. 12x15 Plate Enamelled Dishes, each.....	1.35



V1-A245.	27 B	10c
V1-A246.	27A	15c
V1-A247.	128	15c
V1-A248.	63	30c
V1-A249.	8	50c
V1-A250.	58/3	50c
V1-A251.	126	25c
V1-A252.	120 Lamp for candle	1.50
V1-A253.	120 Lamp for gas	3.00
V1-A254.	64	2.25
V1-A255.	20B/1	1.60
V1-A256.	31D/1	15c
V1-A257.	31D/2	10c
V1-A258.	65/3	60c
V1-A259.	120 Lamp for oil	3.00
V1-A260.	120 Lamp for electric light	3.00
V1-A261.	64 Lamp for electric light	2.30
V1-A262.	Candle Holders for lamps, each	5c
V1-A263.	Night Light, per dozen	35c

Lamps



Crushmeter

V1-A275. Combined Tablet Crusher and Measure (4 oz.) For the easy crushing and rapid solution of tablets: greatly facilitates solutions of crystals and powders..... 60c

Negative Boxes

V1-A276.	50 $3\frac{1}{4} \times 4\frac{1}{4}$ Plates	30c
V1-A277.	100 $3\frac{1}{4} \times 4\frac{1}{4}$ Plates	60c

The "Negasys" File

A negative filing system that automatically adapts itself to every photographer's needs.

V1-A517.	$3\frac{1}{4} \times 4\frac{1}{4}$ Box complete with envelopes to take 50 negatives	45c
V1-A518.	4x5 Box complete with envelopes to take 50 negatives	55c
V1-A519.	$5\frac{1}{2} \times 3\frac{1}{2}$ (Postcard size)	75c

The Film Negasys File

V1-A520.	$3\frac{1}{4} \times 4\frac{1}{4}$ Negative Box complete, with 100 wallet cards.....	75c
V1-A521.	$5\frac{1}{2} \times 3\frac{1}{2}$ Negative Box complete, with 100 wallet cards.....	1.25

Mounts

Plate sunk mounts, in three colors, white, grey and black.

In Any Color.

V1-A281.	2¼x2¼, dozen.....	8c	(Assorted or all of one design.)	
V1-A282.	2¼x3¼, dozen....	10c	V1-A281. 2¼x3¼, per doz	10c
V1-A283.	2½x4¼, dozen.....	15c	Per 100	70c
V1-A284.	3¼x4¼ dozen.....	15c	V1-A282. 2¼ x 3¼, super-	
V1-A285.	3¼x5½, dozen.....	15c	fine quality, per doz	15c
V1-A286.	3½x3½, dozen ...	15c	Per 100	1.30
V1-A287.	4x5, dozen.....	15c	V1-A283. 3¼x4¼ per doz	15c
V1-A288.	6½x4¾, dozen...	25c	V1-A284. 3¼ x 4¼, super-	
V1-A289.	5x7.....	25c	fine quality, per doz	20c
			V1-A285. 3¼x5½, per doz.	20c
			V1-A286. 4 x 5, per doz.....	20c
			V1-A287. 4¾x6¼, per doz	25c

Developing and Printing Outfits

V2-A280. These outfits include all the necessary articles and materials for developing and printing, and are suitable for use with **any camera** up to 4x5 inches..... 1.50

Large Sizes to Order.

Lecture Lanterns

The Lanterns in the following pages are guaranteed to be of the best **English manufacture**, and are tested before leaving the factory, and again before leaving the store, to ensure their being in **perfect working order**.

The **style, design** and **finish** leave nothing to be desired.

When ordering, it is important to name the illuminant you intend to use, as fittings for the various forms of illuminants vary accordingly.

Information and quotations will be cheerfully given.

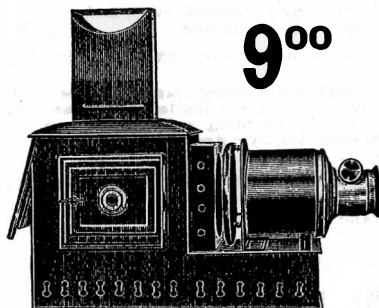
In ordering a lantern for a certain size hall it will be necessary to give us the following particulars, viz. :—

Size of picture desired

Distance between lantern and screen

we can then send you the the nearest lens to give the desired result.

Magic Lanterns



9⁰⁰

SPECIFICATION

V1-1003/64. **BODY** as No. 1001/57, but with **Brass Eye Piece** and circular brass stage.

CONDENSER, LENS,

As in No. 1001/57.

Price.....9 00

V1-1002/58. Fitted with tray and jet support and cowl.

Price... ..9.00

SPECIFICATION

V1-1001/57. **BODY.** Made of **Russian Iron** and fitted with panelled door provided with brass handle. There is a hinged door at the back and the lantern is well ventilated. The square spring stage in the front will hold any type of slide carrier, and the front tube is brass.

CONDENSER. 4 inches diameter. compound plano-convex.

LENS. Double combination achromatic lenses 2 inches in diameter.

Price.....8.00

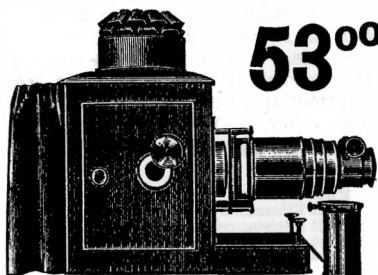
SPECIFICATION

V1-1009/231. This lantern is similar to No. 1008/229, but is fitted with a Telescopic Front which allows Lenses (interchangeable) of any Focus to be used.

This makes a splendid **travelling Lecturer's Lantern** as it is suitable for any size hall.

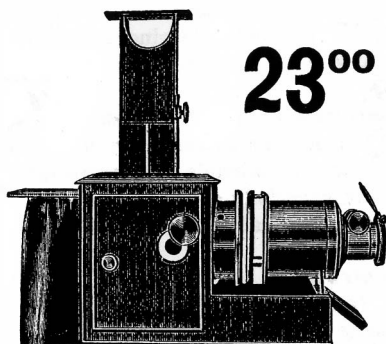
The Lenses are mounted in tube form, and slide into the jacket from the front and can be changed at will. Diameter $2\frac{3}{8}$ inches.

Price..... 53.00



53⁰⁰

Magic Lanterns



23⁰⁰

V1-1005/123. Russian Iron Magic Lantern, with improved and ventilating circular open stage

BODY made of Russian iron, with all the openings wired (giving greater strength). The base is open at the front, forming a receptacle for the lamp chimney. This lantern is **exceptionally well ventilated**. Also fitted with a finely adjusted **tilting arrangement**. There is a hinged flap at the back which rests on a sliding brass rod provided with a **black fireproof curtain**.

CONDENSER—Double convex and Meniscus, 4 ins. diameter,

LENS —Double combination achromatic, 2 ins. diameter, fitted with **Tinter slots** and flap shutter.

Lantern fitted with tray, jet support and cow!, Stock's wrench lamp, and double pinioned lens, 2 $\frac{3}{4}$ inches diameter, with flap shutter **23.00**

V1. 1008/229. Russian Iron Magic Lantern with Steam-Preventing Stage. Specially Designed for the Electric Arc.

BODY —Similar to No. 1005/123, except that it is much larger and the front, sides, and base are strengthened on the inside with sheet iron rivetted to the body itself; the body being sufficient to take th, largest Arc Lamp. **Efficient Tilting Arrangement**.

CONDENSER—Double Convex and Meniscus.

LENS —Best quality, double, combination Achromatic Lenses, 2 $\frac{3}{4}$ inches diameter.

CASE —Polished Wood, dovetailed and provided with stout Leather Handle and Lock and Key.

Price of above as specified **40.00**

CINEMATOGRAPH MACHINES

Should you be interested write us for particulars of machines we handle.

The Improved Stocks Wrench Lamp

is the most powerful paraffin oil lamp extant, **giving 130 Standard Candle Power.**

A very satisfactory light for lantern projection.

That this form of illuminant is free from all danger appeals to many lanternists. It's simplicity, **with complete success.**

The reason for this is, that the same management only is required as is essential when using an ordinary paraffin lamp and this, from its simplicity, may be said to be universally understood.

The **Best Lamp** of its series.

Price **6.25**

Nernst Electric Lamp, each	7.50
Nernst Filaments	1.50
Nernst Resistance	50c
Nernst Projector with automatic heating arrangement for heating filaments. Price.....	19.00
Extra Burners for these lamps.....	4.50

